



EPIC ONE
ADVENTURES

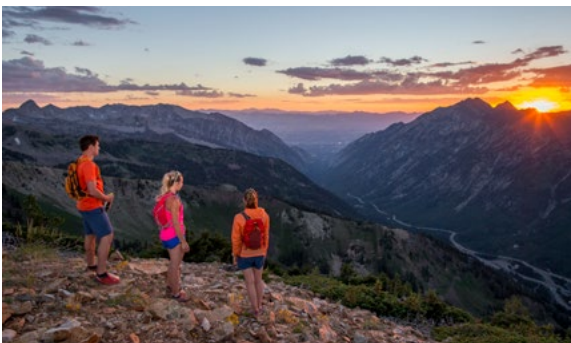
WASATCH FRONT SUMMER ITINERARY

SINGLE DAY TOUR / OPTION 1



The Salt Lake Valley sits against the beautiful Wasatch Mountains, and they should be experienced up close. After breakfast, we will drive up Little Cottonwood Canyon until we reach the mountain town of Alta, where the ski resorts of Snowbird and Alta are located. The upper meadows are famous for the wildflowers in summer set against the jagged granite peaks.

The Snowbird resort is a perfect setting for today's mountain adventures. We will enjoy a few of the activities here including taking the only tram in Utah to the top of Hidden Peak where we will have lunch on the patio with sweeping 360° views. After lunch, we will have the option of either hiking or mountain biking*.



From Snowbird we will drive up Big Cottonwood Canyon, another one of the deep canyons that are home to two more of the well known ski resorts, Brighton and Solitude. Once we near the top, we will take Guardsman's Pass, only open in summer, which empties in to Deer Valley. From here, we will drive in to Park City and on to main street. Clients will be able to explore the many quaint shops and art galleries.



After Park City, we will drive down Parley's Canyon and back to down town Salt Lake. While down town, we will tour the world famous Temple Square with its beautiful gardens and museums. Afterward, we will enjoy dinner at one of the many gourmet restaurants. The rest of the evening will be open for clients to continue exploring down town including the new City Creek Center and Trolley Square.



— PRICING STRUCTURE —

▶ 1-2 clients \$495 ea. ▶ 3-4 clients \$395 ea. ▶ 5-10 clients \$345 ea.

Request quote for more than 10 clients

*Additional charge will apply

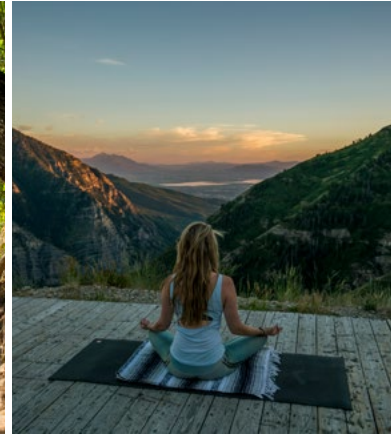
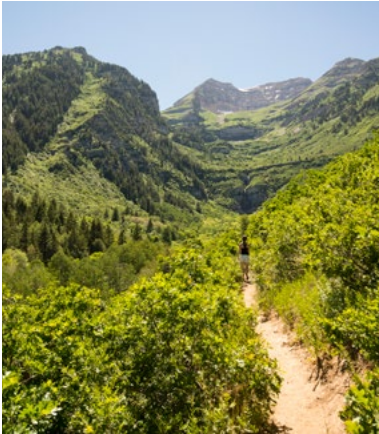


EPIC ONE
ADVENTURES

WASATCH FRONT SUMMER ITINERARY

SINGLE DAY TOUR / OPTION 2

There are few resorts in Utah with the storied history as rich as Sundance Mountain Resort. Founded by Robert Redford in the '70s, Sundance has become a quaint retreat tucked into its own secluded canyon. We will arrive early enough to enjoy brunch at the Foundry Grill. Afterward, we will take the chairlift up to the top of the resort and enjoy a leisurely hike down to the base. Mountain biking or horseback riding along pristine single-track can also be arranged.



From Sundance, we will drive the short distance to the Utah Olympic Park just outside Park City. One of the sites for the 2002 Olympics, the Olympic Park is still used today for training, and has grown to accommodate Utah's booming tourism. We will enjoy several activities at the park including the new zip line tour and ropes course. For the truly adventurous, a ride down the bobsled track with a trained professional can be scheduled*.



After the Olympic Park, we will drive down Parley's Canyon and back to Salt Lake. While down town, we will tour the world famous Temple Square with its beautiful gardens and museums. Afterward, we will enjoy dinner at one of the many gourmet restaurants. The rest of the evening will be open for clients to continue exploring down town including the new City Creek Center and historic Trolley Square.



— PRICING STRUCTURE —

▶ **1-2 clients** \$495 ea. ▶ **3-4 clients** \$395 ea. ▶ **5-10 clients** \$345 ea.

Request quote for more than 10 clients

*Additional charge will apply



EPIC ONE
ADVENTURES

WASATCH FRONT SUMMER ITINERARY

TWO DAY OPTION



— DAY 1 —

The Salt Lake Valley sits against the beautiful Wasatch Mountains, and they should be experienced up close. After breakfast, we will drive up Little Cottonwood Canyon until we reach the mountain town of Alta, where the ski resorts of Snowbird and Alta are located. The upper meadows are famous for the wildflowers in summer set against the jagged granite peaks.

The Snowbird resort is a perfect setting to start today's mountain adventures. We will enjoy a few of the activities here including taking the only tram in Utah to the top of Hidden Peak where we will have lunch on the patio with sweeping 360° views. After lunch, we will have the option of either hiking or mountain biking*.



From Snowbird we will drive up Big Cottonwood Canyon, another one of the deep canyons that are home to two more of the well known ski resorts, Brighton and Solitude. Once we near the top, we will take Guardsman's Pass, only open in summer, which empties in to Deer Valley. From here, we will drive in to Park City and on to main street. Clients will be able to explore the many quaint shops and art galleries.



Once we have finished exploring Park City, we will drive to Sundance. There are few resorts in Utah with the storied history as rich as Sundance Mountain Resort. Founded by Robert Redford in the 70's, Sundance has become a quaint retreat tucked into its own secluded canyon. We will arrive in time for a lovely dinner at the Tree Room. After dinner, you will have time to enjoy the resort. We will lodge here for the night.



— DAY 2 —

In the morning, we will have breakfast at the incredible Foundry Grill. Afterward, we will take the chairlift up to the top of the resort and enjoy a leisurely hike down to the base. Mountain biking or horseback riding along pristine single-track can also be arranged*. From Sundance, we will drive the short distance to the Utah Olympic Park just outside Park City. One of the sites for the 2002 Olympics, the Olympic Park is still used today for training, and has grown to accommodate Utah's booming tourism. We will enjoy several activities at the park including the new zip line tour and ropes course. For the truly adventurous, a ride down the bobsled track with a trained professional can be scheduled*.



After the Olympic Park, we will drive down Parley's Canyon and back to Salt Lake. While down town, we will tour the world famous Temple Square with its beautiful gardens and museums. Afterward, we will enjoy dinner at one of the many gourmet restaurants. The rest of the evening will be open for clients to continue exploring down town including the new City Creek Center and historic Trolley Square.



— PRICING STRUCTURE —

► 1–2 clients \$1,350 ea. ► 3–4 clients \$1,150 ea. ► 5–10 clients \$995 ea.

Prices are based on double occupancy. Add \$150 for single.

Request quote for more than 10 clients

*Additional charge will apply